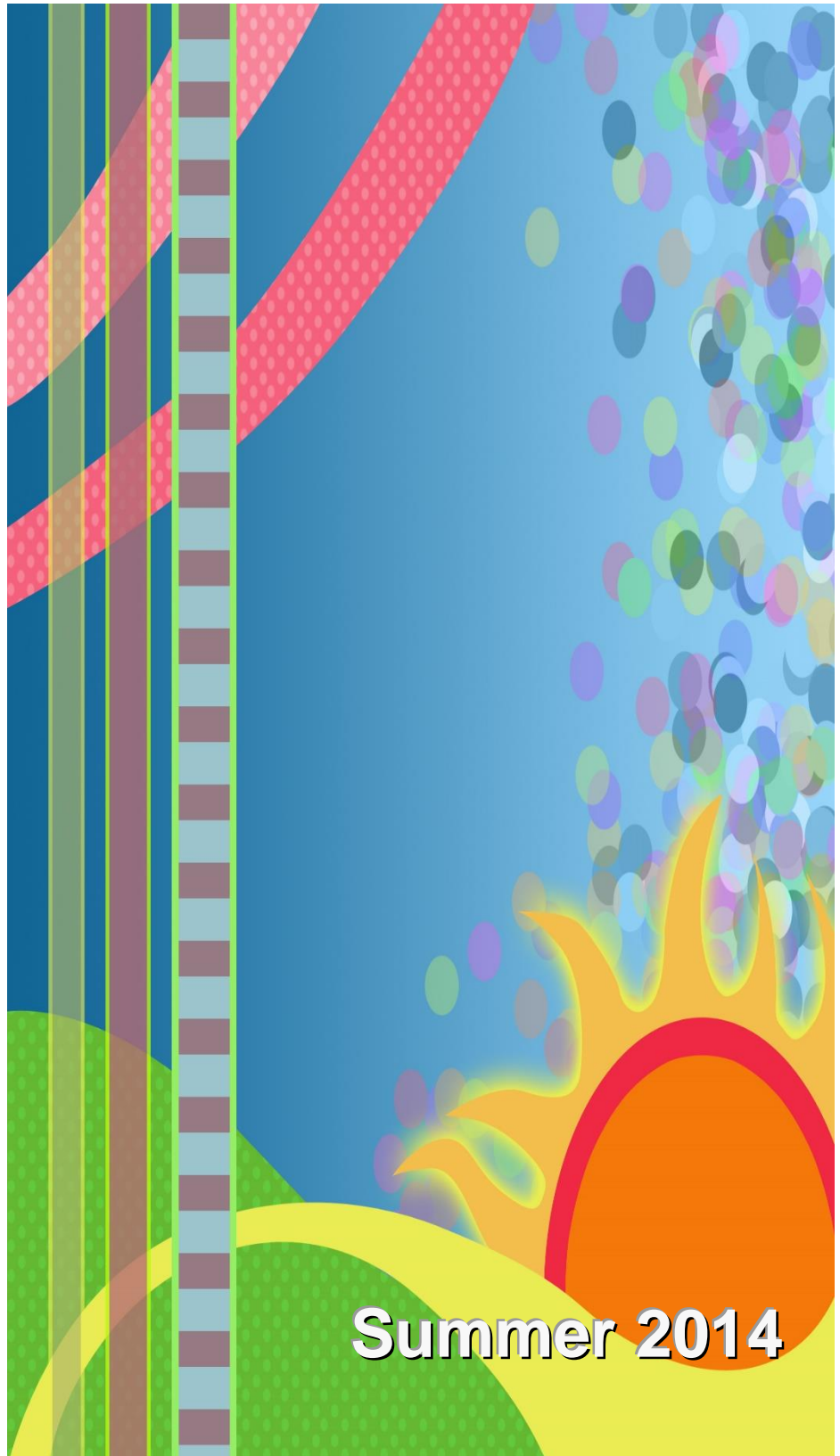


The Messenger



Summer 2014

**Christ Church, Longridge “Living for Christ
at the heart of the community”**
www.christchurchlongridge.org.uk

Rev Ray Writes

As some of you know, I have been asked to contribute to the regular feature called "Voice of the Church" which appears in the Longridge News and Garstang Courier. During my morning prayers on the day I was due to write the piece, the words of Matthew 5.3 came to mind, so I took this as inspiration for the topic to write about this time. And being one for squeezing maximum benefit from any effort, I decided to use it for this edition of The Messenger. The newspaper only gives me 300 words, but I've topped and tailed it and added the bits I had to leave out so you get more!

"Blessed are the poor in spirit, for theirs is the kingdom of heaven." (Matt 5.3) I wonder what you make of this saying of Jesus. Those 13 words raise questions which could make us think for the rest of our days. What does it mean to be blessed? Who are the poor in spirit? What is the kingdom of heaven? Why is it theirs? But the question I would really like to ask is this; how do you feel about being poor? What image comes to mind when you consider that word "poor"? Pause and look with your mind's eye for a moment. What do you see?

There was a time when "poor" used to conjure up images of starving African children with pot bellies and grimy faces lying listlessly in their mothers' arms whilst flies roam all over their bodies with impunity. And indeed there are people who are that poor all over the world. But what about over here in Longridge and environs? Well, here we have the materially poor and the spiritually poor. The materially poor are the people who need a helping hand to make ends meet for whatever reason, and our Christian response can be seen in the food bank, thrift shops and general pastoral care. The spiritually poor are those whose circumstances leave them with no time or opportunity for personal and spiritual development. In

short, their character-growth is stunted, and this condition can be self-inflicted or a result of circumstances beyond people's control. Neither state of poverty is exclusive and both may be present in an individual. The latter are the poor in spirit whom Jesus is addressing.

The good news is that if you are poor in spirit, then the kingdom of heaven is yours. This isn't just a pie in the sky when you die offer. It's space, time and opportunity for spiritual and personal development. I can almost guarantee that at about 10.30am every Sunday morning in any church you will find an opportunity to just be and to receive the kingdom of heaven. In my article, I encouraged the reader to give church a go.

What I didn't write, is that people find it incredibly difficult to walk into church. There could be issues of guilt, unworthiness, lack of confidence, bad memories of church and the like which stop them from walking in. But some would come if they were invited and brought along. Now think on this; what is so hard about asking someone you know if they would like to come to church with you next Sunday morning and saying you'll pick them up from home and either drive them or walk with them to church? The answer is nothing! Well, it's nothing if you understand what I'm asking you to do. I'm asking you to do just three simple things. Firstly, to pray beforehand for the Holy Spirit to go ahead of you and to work in the person's heart and whilst you're at it, pray for that same Spirit to give you the faithfulness to do this. Secondly, to simply ask the person politely and to wait for a response. Thirdly, to bring them into the Father's house if they agree to come.

Let me make myself clear. God never asks us to be successful but he insists that we are faithful to him and to our calling. Most of us want to be faithful but dread a "no" response because that makes us feel that we have failed. Well here's some good news. The outcome isn't in your gift! The outcome is in God's hands.

If every single one of us asked enough people so that we brought one person to Christ Church this year, our congregation would double. If we repeated the same next year, our congregation would quadruple! It is conceivable, at least to me, that within a few years we could fill the church to bursting. Now that, is what I call building the church. Growth will bring a whole new set of challenges like discipling and pastoral care - but they're great challenges to have.

So there is my challenge to you for the rest of your days. Keep asking people to come with you to church and then be involved in our mutual discipleship together. What greater calling is there than that?

Ray

Reverend Ray Borg

Minister

Tel: 01772 768112

Mob: 07734 229135

Christ Church 25th Anniversary!

Yes, it really is 25 years since Longridge Methodist and Longridge UR congregations joined together as Christ Church. We remember too that our joining together as a Local Ecumenical Partnership came after many years of work and witness in the town from both of our denominations. 2014 would be the 130th Anniversary for Longridge Methodist Church and 2015 would see the 150th Anniversary for Longridge URC. Our 'Silver' celebrations take place on June 15th, on the weekend of Longridge Field Day.

This year we welcome a special preacher from the United Reformed Church, who is keenly interested in how the URC expresses its ecumenical commitment. Mr John Ellis, originally from Devon, is at present serving as the URC Lay Moderator of the General Assembly (2013-2016) An Assembly Accredited Lay Preacher, John has served in many church roles including secretary, treasurer and organist. He has led the URC in a rural Local Ecumenical Partnership and helped plant an ecumenical church in a new housing development. Complementing his URC commitments, he has also held positions of responsibility in Baptist, Methodist and Anglican contexts.

We are delighted that he has accepted our invitation to lead our morning worship, which will be followed by a 'Bring and Share' Lunch. (Please see the notice on the board for helping with the refreshments). Our 6.30pm evening celebration will be led by Rev Elizabeth Hodgkiss.

Please take a flyer from the table in the foyer and invite your family and friends to share in our celebrations.

Longridge Congregational Church Young Wives Guild

This is the title of the first meeting dated 17th September 1964 in the Minute book which Olive handed to me when she retired as Secretary. She worked hard for the Guild and will be missed, and very hard to replace.

In September it will be 50 years since the Guild opened. It's detailed that it was decided to pay 2 shillings and sixpence each year as Membership, and a charge of 6 pence at each meeting.

At the meeting on 7th April the Committee regretted the number attending the Guild Meetings had decreased so much and it was suggested we should put some notices around the village letting people know about our meetings.

We only meet monthly in the summer with a variety of outings, and it was decided in September to have a celebration meal for our 50th anniversary.

We do sincerely invite the ladies of Christ Church to come along and swell our numbers. You will be made so welcome.

Megan Crew

Christ Church Ladies Guild 1964 - 2014

Christ Church Ladies Guild, who this year celebrate their 50th Anniversary, invite everyone to join them in a special Guild service at 10.45am on September 14th.

Music in the Afternoon (Edition 7)

Christ Church was once again filled 'With a Voice of Singing' as the South Pennine Singers opened their 'Music in the Afternoon for Christian Aid' concert held on May 11th.

This was a welcome return visit for the 18 strong chamber choir from East Lancs, who under the direction of Geoff Balson and co-director Sue Temperley, delighted the appreciative audience with their wide ranging and varied program of choral items in an afternoon of music for all tastes.

Following a strong unison alternating with the joyful harmonies of Martin Shaw's stirring opening anthem, the first half flowed with a variety of polyphonic styles spanning four centuries. These ranged from an expressive rendition of the Spiritual 'My Lord, What a Morning' and a well-articulated Thomas Morley Madrigal, 'Now is the Month of Maying'; through to Geoff's skilful arrangement of the contemporary John David song, 'You are the New Day'.

Able accompanied by Valerie Shoesmith, several soloists also performed. Duettists Heather Nicholas and Robert Taylor sang 'The Colour of My Life' from Barnum whilst soprano Andrea Goffee sang a thoughtful rendition of 'Pie Jesu' from the Fauré Requiem, followed by tenor Peter Yates, who, along with the singers, performed the Agnus Dei. Andrea would also delight with solos in Bob Chilcott's 'Be Thou My Vision' and Ivor Novello's 'Waltz of My Heart'

Whilst the singers took a short break, Rev Ray Borg, Minister of Christ Church, led a thought provoking reflection on the work of Christian Aid and the need for giving, acting and praying in order to support their ongoing projects at home and overseas.

The second half opened with 'Three Hungarian Folk Songs' by Matyas Seiber. These traditional songs from the choral repertoire,

demonstrated the singers' competent vocal abilities in rhythmic precision, clear diction and well controlled dynamics.

These were followed by two contrasting performances. Firstly of the lively David Willcocks' arrangement of 'Lord of the Dance' and then the emotive plantation song 'Curly-Headed Babby'.

Evelyn Fawcett, who introduced the items in her own inimitable way, gave a comic performance of the Gracie Fields solo, 'I've Never Cried So Much in All My Life', which did serve as a light hearted prelude to a very moving section of a presentation of World War I songs and poems reminding us that 2014 is the Centenary of the start of the Great War.

The audience, moved by this thoughtful tribute, willingly accepted the invitation to join in with songs from that era. The program closed with another arrangement by Geoff, of the 'Irish Blessing' by John Rutter; and was followed by refreshments provided by Pam Cliff and her team.

Proceeds from the concert ticket sales and other donations amounted to over £597.

Edition 8 of this popular concert series will be held on Sunday September 28th and will feature 'Continental Brass', a new Preston based brass quartet directed by Matt Balson. All proceeds will be supporting the ongoing work of the Methodist District in Sierra Leone.

Carol Rose/Jason McMahon

Walk For February - Around Lancaster

As the extremely poor walking conditions still persist, we decided to explore what is in effect part two of last month's adventure in the Lancaster area.

Our meeting point was on St George's Quay, Lancaster. Up to this point the weather had been awful and cancellation was on the cards earlier, but by now the rain had stopped and the afternoon looked promising. All of the old factories have now been demolished on the quay and modern housing is now taking its place.

The walk started by following the River Lune eastwards on a good surfaced track, stopping briefly for a comfort stop at Sainsbury's and on past the industrial estates with the river on our left, quite high and fast flowing. Eventually we arrived at John Rennie's magnificent aqueduct, carrying the canal over the Lune and we then climbed the many steps up to the tow-path and had a look at this impressive structure from the top. From our lofty perch, we had a splendid view for miles in all directions and it was noticeable that every single field in the "Lancashire Levels" contained a pond or lake.

Now it was a pleasant stroll south along the canal through the centre of Lancaster. The canal here is an important feature of the city and we began to wonder if the canal at Preston had been completed by aqueduct to the Leeds and Liverpool canal, would we also have a similar water feature in our city centre?

By now it was lunch time and we used the facilities provided by the water-bus operator and were quickly joined by a squadron of mercenary pigeons, one of whom had a foot missing, but seemed to manage OK.

After lunch, we continued along the canal and were soon in the countryside. On the opposite bank we saw moorhens closely

followed by three swans. Eventually we arrived at Aldcliffe, where we left the canal, walked through a pleasant estate road and down a lane that we had walked up last month and on to the coastal path which took us back to Lancaster.

Despite gloomy predictions, this turned into a pleasant day out. Finding a worthwhile walk is quite challenging at the moment but in our part of the world there are many options and we will always be able to come up with something worthwhile.

Linda & Eddie Grange

Friday Coffee Rota

Jun 6th	Mrs S Lawson	Aug 1st	Mrs E Marven
Jun 13th	Mrs A Barnes	Aug 8th	Mrs B Warren
Jun 20th	Mrs E Marven	Aug 15th	Mrs S Lawson
Jun 27th	Mrs B Warren	Aug 22nd	Mrs L Grange
Jul 4th	Mrs L Grange	Aug 29th	Mrs M Cook
Jul 11th	Mrs M Cook	Sep 5th	Mrs A Barnes
Jul 18th	Rev E Hodgkiss	Sep 12th	Rev E Hodgkiss
Jul 25th	Mrs A Barnes	Sep 19th	Mrs E Marven
		Sep 26th	Mrs B Warren

Walk For March - Blackpool Prom.

Due to the continued poor walking conditions and having explored various options, we finally decided on an old favourite when the going gets tough. The last time we attempted this unchallenging trek, we encountered sheet ice all the way and it turned out to be the most difficult walk of the whole year.

We opted to start the walk from St Anne's Pier, where we had to decide whether to start by walking along the beach, or take the path. The path route was chosen and we started to walk north. As we approached the Blackpool boundary, we noticed that the Pontins Holiday Camp has now been completely demolished and is a giant wasteland. By now we were walking on the promenade and approaching the Pleasure Beach, which was open today. The question was asked, "Will they accept our 'bus passes on the Big One". Sadly, no but worse still, after this month, neither will the tramway operations.

Soon, the first of the piers, the South came into view and here we descended to the lower promenade, enjoying the splendid weather with clear conditions and a gentle southerly breeze. Blackpool Council has put in a huge investment, up-dating the promenade and what a good job they have made of it.

Very soon, we were at the Central Pier, our planned lunch stop, but as we were a little early, it was decided to continue to the North Pier, where we found a sheltered spot overlooking the in-coming tide. The Pier has suffered extensive damage from the recent severe storms and was looking a little sad in places.

Lunch over, it was also the end of the walk and time to plan our return to the start. We decided to return by tram to Starr Gate and to continue by 'bus to St Anne's. Altogether, we had managed to

complete seven miles of walking. All that we need now is a good spell of dry weather to enable us to return to the countryside and our traditional type of walks.

Linda & Eddie Grange

Walk For April - Around Withnell

The Bolton group kindly offered to lead us this month and they opted for an eight mile circuit centred on the village of Withnell, to the north of the Belmont Moors.

Our starting point was the car park behind the Royal Arms at Tockholes where a café and toilets are provided for walkers. The turn-out was an impressive ten and, although the weather forecast was for rain, we had fairly dry conditions all the way.

Starting the walk, we headed along good, easy paths through Roddlesworth woods to the reservoirs, Roddlesworth and Rake Brook and on to Abbey Village. A short section of road walking took us to the Withnell Nature Reserve, which is a converted railway line and very attractive. A feature of the area are a number of examples of artistic basketry, the best of which is a steam locomotive positioned under the arch of a high bridge. Some of us had our photos taken besides this pretty machine.

Our next stop was at Withnell and we visited a memorial to a local VC, gained in the First World War when he carried an important message to the front and returned with the reply, having been badly wounded in the process and died at the end of the journey. From Withnell, we continued on to Brinscall, where our party split into two, half going direct to the lake and the lunch stop and the “B” group taking a longer loop through fields via Brinscall Hall. This is a pleasant spot for lunch, sitting on the forms and watching the wildlife on the lake.

We started the second part of the walk by leaving the village on a quiet lane that took us past the quarry, once a major employer in the area and on to Belmont Road, with the Jubilee Tower on Darwen Moor ahead of us, as always looking as if it is about to launch itself to the Moon. We walked along the road for a while before taking a track back into Roddlesworth Woods and something that we always try to avoid, a steep climb up to the finish.

This was a splendid walk, very varied and benefiting from an abundance of spring flowers. Thanks again to Bill for planning and leading us and giving us the benefit of his considerable experience of the region.

Linda & Eddie Grange

Flower Rota

June 1st	Esther Wolstenholme	August 3rd	Val Fletcher
June 8th	Hazel Scott	August 10th	Margaret Mohyla
June 15th	Mel Watson	August 17th	Audrey Barnes
June 22nd	Val Fletcher	August 24th	Beryl Murrant
June 29th	VACANT	August 31st	VACANT
July 6th	Sandra Ashcroft	Sept 7th	VACANT
July 13th	Margery Cook	Sept 14th	Val Fletcher
July 20th	Sue Lawson		
July 27th	Beryl Murrant		

Action for Children

2014 marks the 145th anniversary of Action for Children, and July 13th has been designated by the Methodist Church as the Sunday to remember the work of this Charity. Since it was founded in 1869 social conditions have obviously changed a great deal, but despite this, there are still many children who are desperately in need of love and care and Action for Children, formerly known as NCH, does a tremendous amount of work in trying to help vulnerable children and young people, who find themselves in harrowing situations, very often through no fault of their own.

Many of us are conscious that our own fledgling Christian Faith was nurtured by Bible stories of such children as Moses, Samuel and David, and we still wonder at the fact that God came into our world as a Child, and through His earthly ministry stressed the importance of children. Starting as a very young child myself, I sold “Sunny Smiles” for the NCH, as I’m sure many of you reading this will have done, always encouraged to care for those children less fortunate than ourselves - the only time my Mum allowed me to knock on neighbours’ doors in the street where we lived, was to ask people to “buy” a little photo in the “Sunny Smiles” booklets!

Action for Children aims to carry out this work of caring for children, and one of its most important tasks is finding foster homes for many children across the UK - an aspect of their work which they are particularly focusing on at the moment - children who are in desperate need of a loving home, so that they can start to turn their lives around. I know this isn’t for everyone, and from what I’ve read it can take up to four years for a person to finally decide to take on such a challenge, but maybe you know someone who has shown an interest in fostering and you could point them towards Action for

Children. Apparently across the UK as a whole, 8,500 foster carers will be needed over the next 12 months.

I pray that as a caring Church, we will continue to support Action for Children through our Sunday Coffee and on July 13th.

Thank you for all your support in the past.

Mel

Walk For May - Woodplumpton to Salwick

For the May walk we decided to explore the pleasant countryside to the North-West of Preston and include a beautiful stretch of the Lancaster Canal.

Starting from Woodplumpton, where car parking is at a premium, we walked up the hill leading to the village and arrived at St Anne's Church. We have visited this interesting building before on previous walks and as we passed through the churchyard, we noticed that someone had placed flowers on the grave of Meg Shelton, the Fylde witch.

Leaving the churchyard, we entered a series of fields, the grass being quite long at this time of year and eventually passed through Whinnyfield farm where we noticed a large drum filled with spent shotgun cartridges, probably the result of a clay pigeon shoot. After the farm, we crossed another field to a canal bridge to join the tow path heading south. A peculiarity of canals is that the milestones indicate the distance from a town, unlike those found on roads that indicate the distance to a town. Therefore, it is not unknown for a walker to travel in the wrong direction!

We now had about three miles of this pleasant waterway with much birdlife to entertain the twitchers amongst us, with nesting mute swans, mallards, with many chicks and a lone tern. Later we passed the Hand and Dagger pub with some wonderful aromas emerging from it, but we managed to resist temptation and instead settled for our packed butties whilst sitting on a convenient canal side form. We then skirted what some of us of a certain age may remember as the Jolly Roger café, but now, alas, private housing. At the end of the canal section, we passed the enormous BNF site in the distance with warning signs advising us what to do if we heard the sirens.

We now left the canal and entered a lane for a while until we reached the Saddle Inn, where we joined a series of paths and fields and crossed a number of stiles which could best be described as The Good, The Bad and The Ugly, the latter providing much fear and excitement. Eventually, we turned onto Bartle Lane and headed back over the noisy M55 and back to Woodplumpton.

This turned out to be a pleasant country walk with a lot of variety, yet we were only a few miles from Preston, but you would hardly know it.

Linda & Eddie Grange

Christ Church Worship and Events

June 1st

AM Mrs Zoe Ainsworth
PM Mr Henry Rose

June 8th

AM Rev Ray Borg (Holy Communion)
PM Sister Janet Edwards (at Park House)

Tuesday June 10th

7.30pm Preston Ribble Circuit Preachers' Meeting at Christ Church

June 15th Church Anniversary

AM Mr John Ellis

followed by 'Bring and Share' Lunch

PM Rev Elizabeth Hodgkiss

Wednesday June 18th

7.30pm Preston Ribble Circuit Meeting at Fulwood Methodist

June 22nd

AM Mrs Cynthia Longden

PM Dr Carol Spencer

Wednesday June 25th

7.30pm An evening on 'Voice Production' for all Lay Preachers, Worship Leaders and Readers led by Rev Brenda Willis at Lytham URC hosted by the Lay Preachers Fellowship

June 29th Civic Sunday

11.15am St Paul's (no service at Christ Church)

All invited to share in this community event

PM Rev Ray Borg (Holy Communion)

July 6th

AM Sister Janet Edwards

PM Rev John Fisher

July 13th

AM Rev Elizabeth Hodgkiss (Holy Communion)

PM Mr Henry Rose (at Park House)

July 20th

AM Miss Joyce Dagers

PM Rev Nick Moxon

July 27th

AM Rev Ron Lewis

PM Rev Ray Borg (Holy Communion)

August 3rd

AM Rev Ray Borg

PM Rev Malcolm Maymand

August 10th

AM Mr David Evans

PM Rev Elizabeth Hodgkiss

August 17th

AM Dr Carol Spencer

PM Rev Ray Borg (Holy Communion)

August 24th

AM Mr Harry Duckett

PM Rev Mark Slaney

August 31st

AM Mrs Carol Rose

PM Circuit Service at Bamber Bridge Methodist Church

Dates for your Diary

Wednesday June 4th

7.30pm Thank you event for all who helped with the Shoebox appeal. Please see letter on the notice board in the foyer for details.

Thursday June 5th

Coffee Day at the Civic Hall.

If you can help in any way, please see Pam Cliff.

Sunday June 8th

3 – 4pm Connexion Zone

Tuesday June 10th

7.30pm The Circuit Preachers' Meeting will take place at Christ Church. Please see Carol Spencer if you can help with refreshments.

Saturday June 14th (LONGRIDGE FIELD DAY)

Please see John Spencer if you can help to pitch and/or strike the CTL marquee or staff the tent during the day.

Sunday June 15th (CHRIST CHURCH 25th ANNIVERSARY)

For more details of this important day in the life of our church, please see article elsewhere in the magazine.

Saturday June 21st

9.30am to 12.30pm at Leyland Methodist Church

'All the World Belongs to You'

District World Church Event. All Welcome

Tuesday June 24th

7.30pm Encircled in Care Study Course for pastoral visitors and everyone interested in a caring ministry. This is the third session but each one can stand alone so anyone who is interested is welcome to join us to look at best practice.

Thursday June 26th to Thursday July 3rd

The Annual Methodist Conference meets in Birmingham

Thursday July 3rd to Sunday July 6th

The General Assembly of the United Reformed Church meets in Cardiff. Please hold all our leaders and Assembly and Conference delegates in your prayers as they make important decisions about the future.

Wednesday July 2nd

9.30am Connexion Zone with Barnacre Road School and 2to School. All offers of help would be gratefully received. Please see Carol or John Spencer or just turn up.

Monday July 7th

9.00am at church Craft Club Trip to North Wales

There will not be a Sunday Connexion Zone in July.

Thursday August 7th

CTL Coffee Day at the Civic Hall. Please see Pam Cliff if you can help.

Sunday August 10th

3–4pm Connexion Zone

Sunday August 31st

6.30pm Circuit Service to welcome the new Circuit Minister, the Rev Andrew Webb and his family.

ADVANCE NOTICE

Thursday September 4th	Coffee Day at the Civic Hall
Saturday September 13th	Methodist District Synod
Sunday September 14th	Connexion Zone
Sunday September 28th	‘Music in the Afternoon’ with Continental Brass in aid of Sierra Leone
Thursday October 2nd	CTL Harvest Supper

Pam Cliff has passed on the following information about our Christian Aid efforts this year.

£700 was sent as a result of this year’s Lent lunches and a further £873-40 was banked from the Civic Hall Coffee Day; the Quiz; the boxes and the very successful Music in the Afternoon making a grand total of £1573-40. Once again our thanks go to Pam for all the work she has done for Christian Aid on behalf of both our church and the Church of England over the years.

Services

FESTIVAL

ACT

SUNDAY

- 9.00am** Prayer Breakfast*
*Normally 1st Sunday of month
- 10.45am** Morning Worship &
Junior Church
- 3.00pm** Connexion Zone*
*Normally 2nd Sunday of month
- 6.30pm** Evening Worship*
*2nd Sunday at Park House

MONDAY

- 10.00am** Craft Club
- 7.45pm** Ladies Guild*
*2nd and 4th Monday each month

FRIDAY

- 7.45am** CTL Morning Prayers*
*At St Paul's in 2014
- 10.00am** Coffee Morning

SATURDAY

- 9.30am** Christ Church Ramblers*
*2nd Saturday each month

MINISTER: Rev Ray Borg 01772 768112

(Church Secretary) Mrs Mel Watson 01772 783581 or
(Senior Steward) Geoff Balson 01772 655129 or
(Pastoral Secretary) Dr Carol Spencer 01772 782829

EDITOR: Robin Spencer
robspencer@o2.co.uk