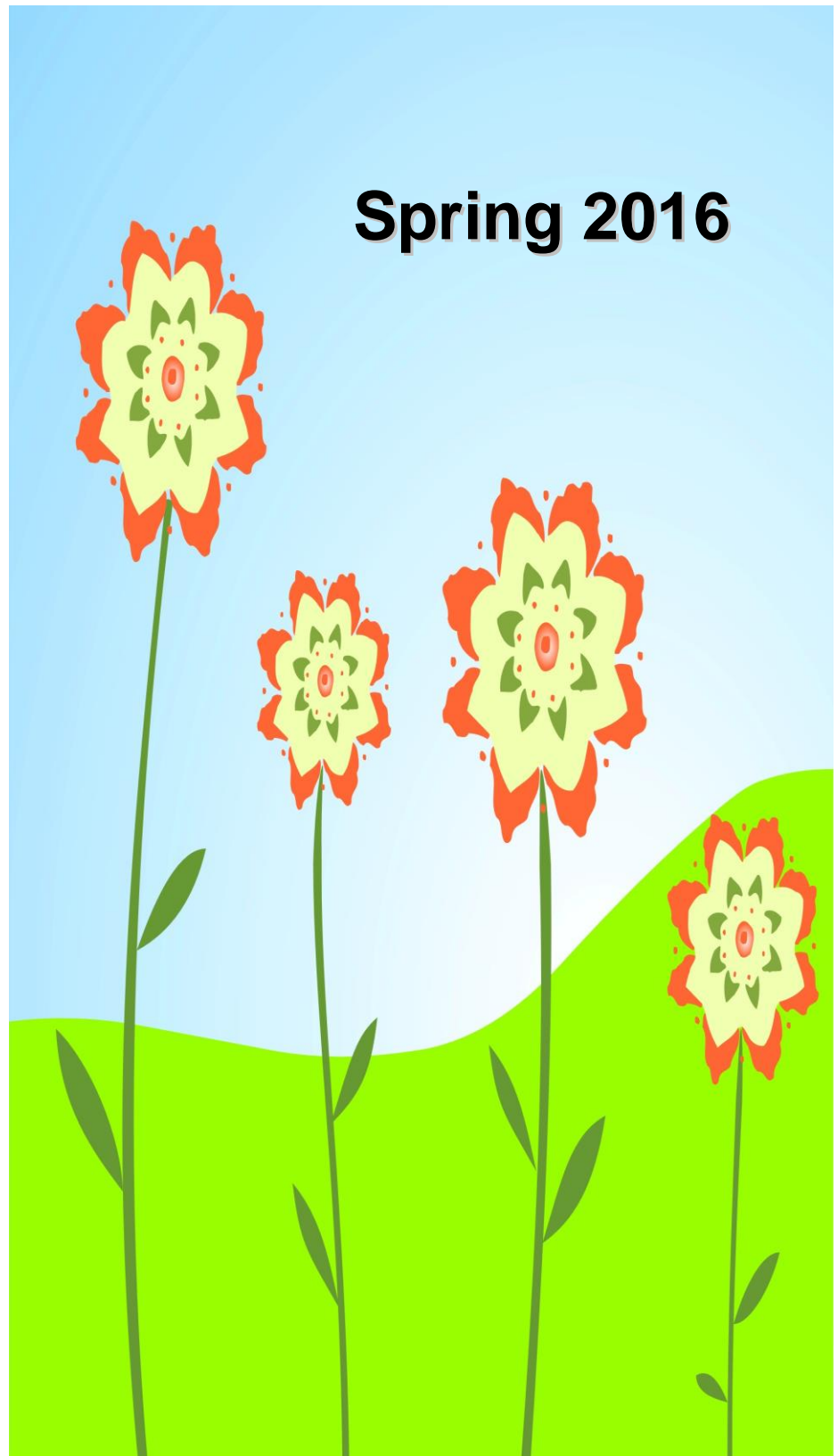


# The Messenger



**Christ Church, Longridge “Living for Christ  
at the heart of the community”**  
[www.christchurchlongridge.org.uk](http://www.christchurchlongridge.org.uk)

# News from Sierra Leone

It felt strange to return to strong winds and rain on Tuesday morning after leaving Lungi airport in Sierra Leone in 35 degrees of heat only 12 hours earlier. I, along with Rev Mark Slaney, had spent the last eight days visiting our friends in Freetown, Segbwema and Kailahun. After the Ebola epidemic in West Africa this was the first opportunity to reconnect with them. We wanted to visit, firstly to show them we are still here for them and secondly, to understand the situation so together we can plan for the future.

We had many meetings with the senior leadership team of the church, the staff at Nixon Hospital in Segbwema and the staff and students of the Red Rose Skills Centre in Kailahun. Mostly we listened - to the people as they told us of how they coped with Ebola and of friends and colleagues they lost – we encouraged them and they encouraged us as we listened to their unerring faith in Christ. Just two stories to finish with.

We went to morning prayers with the nurses at Nixon Hospital and enjoyed their vibrant singing followed by a bible reading and prayers. The hospital has just started using electricity via solar panels and this is still a novelty for the nurses. After these devotions it is usually a time for announcements and notices, and this day was no different. After welcoming us as old friends, John Saffa reprimanded the nurses by saying ‘WILL YOU TURN THE LIGHTS OFF IN YOUR ROOMS WHEN YOU LEAVE!’

In Kailahun we were able to visit the site of the Ebola Treatment Centre, and of course the cemetery next to it. People from all over Sierra Leone are only just starting to visit this cemetery to pay their respects. It was a very moving experience, when we got back to the town Sarah confided in us that it was the first time she had felt able to visit the cemetery.

It is hard to imagine what some of the folk in Sierra Leone have been through, please continue to remember them in your prayers.

John Spencer

## **World Church**

£324.21 was submitted recently for 'Commitment for Life' and 'Methodist World Mission Fund'. I will now be able to forward cheques for £298.03 and £26.18 to the Methodist Church and URC respectively. These are from the collecting boxes that individuals hold and if you would like a collecting box or would like to know more about the schemes, please see me.

Sue Lawson

## **Clean for the King!**

As the Queen's 90th Birthday celebrations draw near you may have heard of the initiative 'Clean for the Queen', where people are being asked to clean up their neighbourhoods. So, as we usually have a church spring clean we are calling it 'Clean for the King'. This will take place on Friday 18th and Saturday 19th March between 10am and 4pm. You just need to turn up during these times to help spring clean our premises. 5 minutes or 5 hours it doesn't matter how long you can give.

Also please remember that most Monday mornings during Craft Club, if you are able to lend a hand with maintenance of any sort, there is usually someone in church. Please see John if you are able to help.

# *M*usic makers

*Meet Fridays*

*7.00pm-8.30pm*

*‘Explore and Enjoy...*

*Hymns, Psalms and  
Spiritual Songs!’*

*Sessions led by Carol Rose*

Ray has received a letter from Sheena Jackson, Vena Slater's daughter. Vena died last year, and Sheena returned to Christ Church after a number of years. As well as thanking Ray for his ministry following Vena's death, Sheena has sent a photo which looks as though it was taken in the 1960s or early 1970s. We would be interested to identify those who appear in the photo. Some of us, including Pam Cliff, have had a look and identified a few people. This leads us to believe that the photo was taken on an occasion when several Longridge churches had met together, probably for a joint choral event. We know that there used to be performances of Messiah in which several churches joined so this may be one of those. If at all possible, we will put the photo on the church website and we would be interested to know if you recognise anyone. Please let any member of Council know if you can add to our knowledge. Our thanks go to Sheena for this interesting challenge and we continue to remember all Vena's family in their bereavement.



# **Red Rose Skills Training Centre, Kailahun, Sierra Leone**

When John returned from his latest trip to see our partners in Sierra Leone, I received yet another generous gift. The staff and students of the Training Centre, have made me a matching skirt and top. Most of the fabric has been woven by Rose who teaches weaving and some of her students and is shot through with metallic threads. There are insets of dyed material, making a very bright outfit. I hope to show it at church in the near future.

I also received a lovely letter from Sarah Moiwo, the Manager of the Training Centre. She spoke painfully of the difficulties they had experienced during the Ebola outbreak. She is particularly sad that many of the students have not returned, after the Centre was compulsorily closed.

She writes: “All schools, colleges and training centres were closed for 11 months. This had a negative effect on education throughout the country and resulted in a lot of teenage pregnancies. The government is trying to find ways of absorbing them in the normal school system.”

Sarah thanks us all for our support and prayers which she says, mean a great deal to the staff there and in turn they are praying for us.

Carol Spencer

## **Post Script**

Lord, help me to remember that nothing is going to happen to me today that you and I cannot handle together. *(Margaret Mohyla)*

We are glad to hear that Linda Grange's health is improving and we look forward to seeing Linda and Eddie again soon. We continue to support all the family and pray that this year may be easier and healthier than 2015.

We also want to assure all those who have been bereaved over this Winter, of our continued prayers as they cope with their losses.

## Friday Coffee Rota

<b>Mar 4<sup>th</sup></b>	Mrs B Warren	<b>May 6<sup>th</sup></b>	Mrs A Barnes
<b>Mar 11<sup>th</sup></b>	Mrs A Barnes	<b>May 13<sup>th</sup></b>	Rev E Hodgkiss
<b>Mar 18<sup>th</sup></b>	Rev E Hodgkiss	<b>May 20<sup>th</sup></b>	Mrs M Cook
<b>Mar 25<sup>th</sup></b>	Good Friday (No Coffee)	<b>May 29<sup>th</sup></b>	Mrs E Marven
<b>Apr 1<sup>st</sup></b>	Mrs M Cook	<b>Jun 3<sup>rd</sup></b>	Mrs S Lawson
<b>Apr 8<sup>th</sup></b>	Mrs E Marven	<b>Jun 10<sup>th</sup></b>	Mrs L Grange
<b>Apr 15<sup>th</sup></b>	Mrs L Grange	<b>Jun 17<sup>th</sup></b>	Mrs B Warren
<b>Apr 22<sup>nd</sup></b>	Mrs S Lawson	<b>Jun 24<sup>th</sup></b>	Mrs A Barnes
<b>Apr 29<sup>th</sup></b>	Mrs B Warren		

Owing to sickness we are getting low on helpers.

If anyone would like to help on Fridays, please see Margery Cook.



**CHRIST CHURCH  
LONGRIDGE**

**'MUSIC IN THE AFTERNOON'**

*(Ed 11)*

a welcome return of the

**'SOUTH PENNINE SINGERS'**

**Sunday May 22<sup>nd</sup>**

**At 2.30pm**

**Tickets: £5 incl. refreshments**

*(or pay at the door)*

**All proceeds to Christian Aid**

**Contact: Carol Rose 01772 783680**



# Christ Church Worship and Events

As you will certainly have noticed by now (especially if you've had your pancakes) Lent and Easter are very early this year. We are having a series of four Bible Studies under the title 'One Mission'. The first of these 'Called to Serve' will be in church at 7.30pm on Thursday February 25th. We apologise that, because of publication dates etc., you may not get this magazine before the first study. The studies are linked but it will not be difficult to join the series at Study 2 or just to come to one or two of the studies if you can't manage all the dates.

## **FEBRUARY 28TH TO MARCH 2<sup>ND</sup>**

Churches Together Retreat-at-Home

## **WEDNESDAY MARCH 2<sup>ND</sup>**

7.30pm Circuit Meeting at Lea

## **THURSDAY MARCH 3<sup>RD</sup>**

7.30pm Second of a series of four Lent Bible Studies entitled 'One Mission' at Christ Church.  
Study 2: 'Giving all we can'

## **FRIDAY MARCH 4<sup>TH</sup> Women's World Day of Prayer**

11.00am Churches Together Service at St Wilfrid's

12 noon Lent Lunch also at St Wilfrid's

## **SATURDAY MARCH 5<sup>TH</sup>**

'Faithful and Fruitful' Lancashire District Day at Shuttleworth College, Padiham. Please see notice in foyer for details. Pre-booking advised.

## **SUNDAY MARCH 6<sup>TH</sup> Mothering Sunday**

AM Rev Ray Borg (Holy Communion)

PM Rev Elizabeth Hodgkiss

**THURSDAY MARCH 10<sup>TH</sup>**

7.30pm Third 'One Mission' study  
Study 3: 'Praying for change'

**FRIDAY MARCH 11<sup>TH</sup>**

12 noon Lent Lunch by Christ Church

**THURSDAY MARCH 17<sup>TH</sup>**

7.30pm Fourth 'One Mission' study  
Study 4: 'One Mission'

**SUNDAY MARCH 13<sup>TH</sup>      Passion Sunday**

AM Mr Henry Rose

PM Deacon Janet Edwards

**FRIDAY MARCH 18<sup>TH</sup>**

12 noon Lent Lunch at Christ Church provided by St Lawrence  
with St Paul's

**SUNDAY MARCH 20<sup>TH</sup>      Palm Sunday**

AM Dr Carol Spencer

3pm Rev Ray Borg (Holy Communion at Plessington Court)

**MONDAY MARCH 21<sup>ST</sup>**

NO CRAFT CLUB

**WEDNESDAY MARCH 23<sup>RD</sup>**

10.00am CONNEXION ZONE (helpers from 9.30 please)

**THURSDAY MARCH 24<sup>TH</sup>      Maundy Thursday**

7.30pm Rev Ron Lewis (Holy Communion)

**FRIDAY MARCH 25<sup>TH</sup>      Good Friday**

10.45am Rev Ray Borg

12 noon CTL prayers at the Townely Gardens



## **SATURDAY MAY 7<sup>TH</sup>**

9.30am Methodist District Synod

## **SUNDAY MAY 8<sup>TH</sup>**

AM Rev Ray Borg (Holy Communion)  
ANNUAL CHURCH MEETING after morning service.  
Please make this a priority.

## **SUNDAY MAY 15<sup>TH</sup>**

AM Rev Ron Lewis  
3.00pm Rev Ray Borg (Plessington Court)

## **MAY 15<sup>TH</sup> TO MAY 22<sup>ND</sup> CHRISTIAN AID WEEK**

Proposed activities are: -

Friday 20<sup>th</sup> Quiz night at Christ Church  
Sunday 22<sup>nd</sup> 10.45am Morning Worship - John and Carol Spencer  
2.30pm Music in the Afternoon - see poster

## **WEDNESDAY MAY 25<sup>TH</sup>**

10.00am CONNEXION ZONE

## **SUNDAY MAY 29<sup>TH</sup>**

AM Rev Elizabeth Hodgkiss  
PM Deacon Janet Edwards

## **SUNDAY JUNE 5<sup>TH</sup> Christ Church Anniversary**

AM Rev Michele Charmany (Holy Communion)

**ADVANCE NOTICE** June 11<sup>th</sup> Longridge Field Day. Help will be appreciated with all the practicalities on the day.

Please check the weekly notices (displayed in the porch window) or the notice boards in the foyer for more details on all our activities.

From Margaret Mohyla

If after church, you wait awhile.  
Someone may greet you with a smile,  
But if you quickly rise and flee,  
We'll all seem cold and stiff, maybe  
The one beside you, in a chair  
Is perhaps a stranger too,  
All here, like you, have fears and cares;  
All of us need each other's prayers,  
In fellowship we bid you meet  
With us around God's mercy seat.

(From Christ Church, Port Sunlight)

# Services

# Timeline

# Activities

## SUNDAY

**9.00am** Prayer Breakfast\*

\*Normally 1st Sunday of month

**10.45am** Morning Worship &  
Junior Church

**3.00pm** Afternoon Worship\*

\*Normally 3rd Sunday at Plessington Court

**6.30pm** Evening Worship

## MONDAY

**10.00am** Craft Club

**7.45pm** The Guild\*

\*1st Monday of month

## FRIDAY

**7.45am** CTL Morning Prayers\*

\*At St Wilfrid's in 2016

**10.00am** Coffee Morning

**7.00pm** Music Makers

## SATURDAY

**9.30am** Christ Church Ramblers\*

\*As announced – please see notices

**MINISTER:** Rev Ray Borg 01772 768112

(Church Secretary) Mrs Mel Watson 01772 783581 or

(Senior Steward) Mrs Carol Rose 01772 783680 or

(Pastoral Secretary) Dr Carol Spencer 01772 782829

**EDITOR:** Robin Spencer  
robspencer@o2.co.uk